



RELEASE NOTES

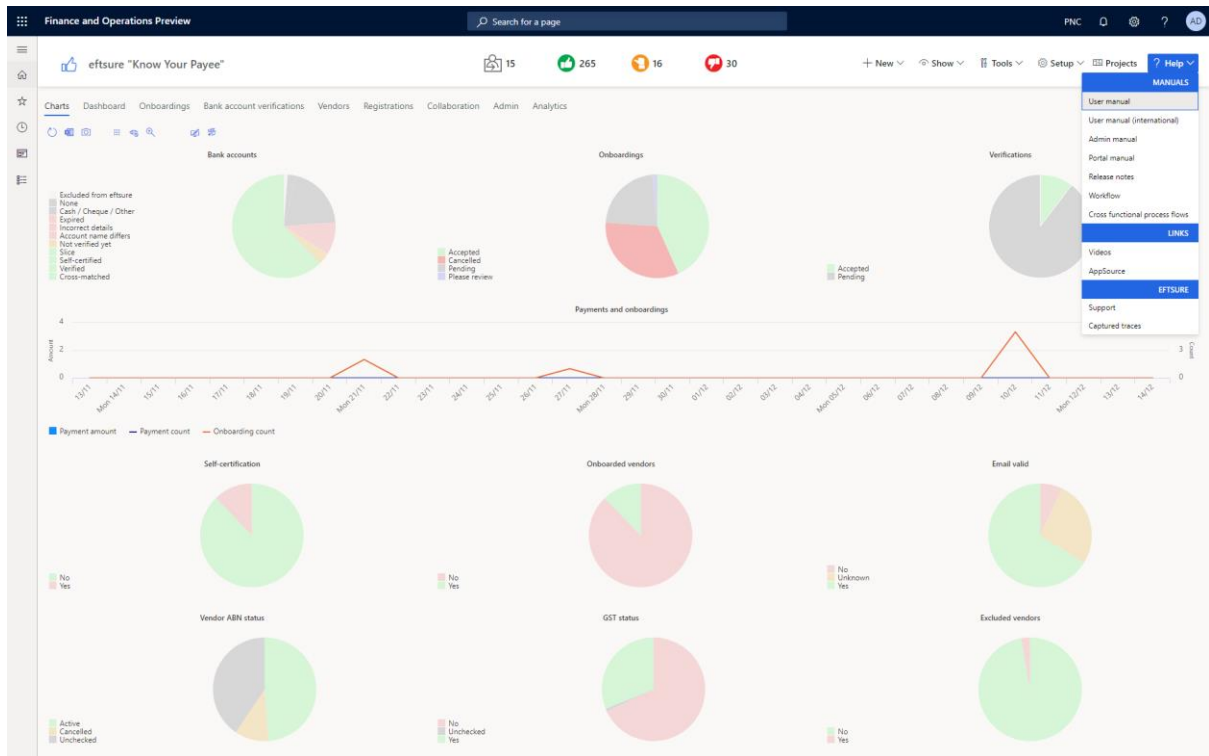
Contents

Introduction	3
Home Page	4
Navigation:	4
Before:	4
After:	4
Menus	5
Before:	5
After:	5
Charts	6
Projects	6
Toolbars	6
Workflow viewers	6

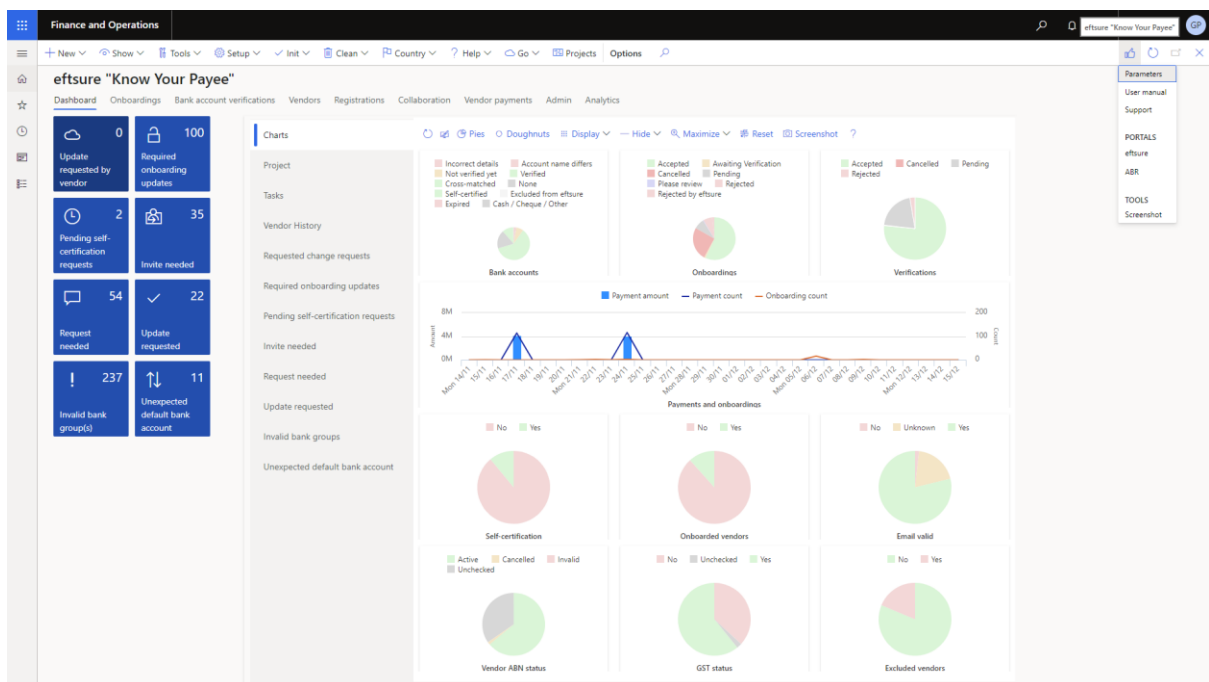
Introduction

This release has a focus on User Interface redesign to make our screens easier to use and increase usability. The workspaces, charts, menus, toolbars have been redesigned to help the user access key features faster.

Look and feel after this update:

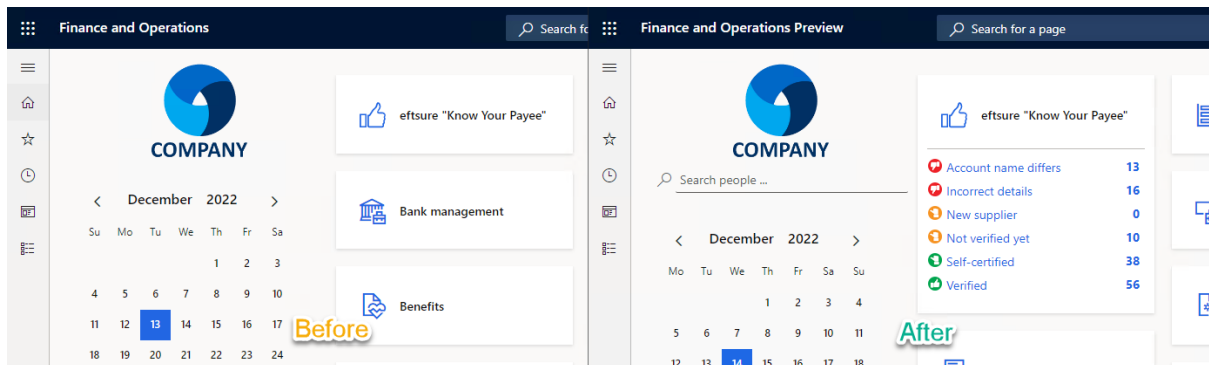


Look and feel before this update:



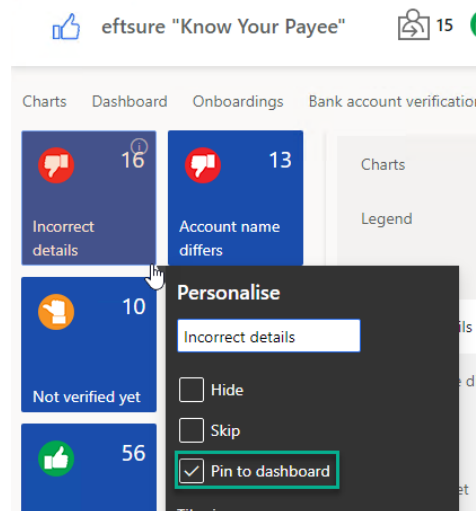
The new UI update also maximise screen real estate to maximise viewing experience and avoid lost screen space.

Home Page



The tiles from eftsure 'Know Your Payee' workspace can now be pinned to the main dashboard, and will also include eftsure green, orange, red icons for increased visibility.

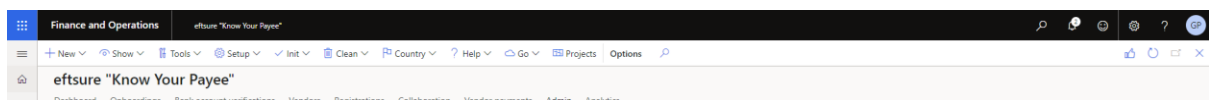
To achieve this, go to the eftsure 'Know Your Payee' workspace, select any tile, Personalise <TileName>, Pin to Dashboard, and voila!



Navigation:

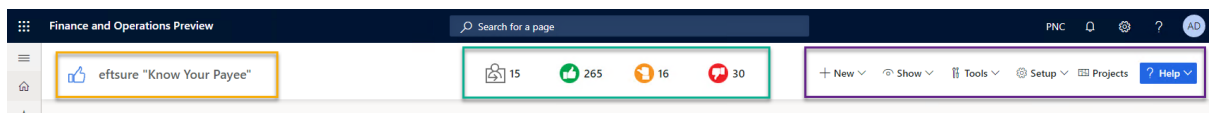
Before:

The eftsure 'Know Your Payee' workspace used to look like the following, with no icons, no headers, just a single menu in the appBar.



After:

The eftsure 'Know Your Payee' workspace has additional navigation features to quickly navigate to the main features:



The eFTS logo and text, in yellow, will help you navigate to the eFTS portal (Live, UAT or Sandbox, depending on configuration), and will match user theme.

The eFTS icons, in green, represent the status of your vendor master file, and will help you navigate to the relevant matching forms:

Count of pending onboardings, navigates to the onboarding screen,

Count of green suppliers, navigates to the list of **Verified** suppliers,

Count of orange suppliers, navigates to the list of **Not verified Yet** suppliers,

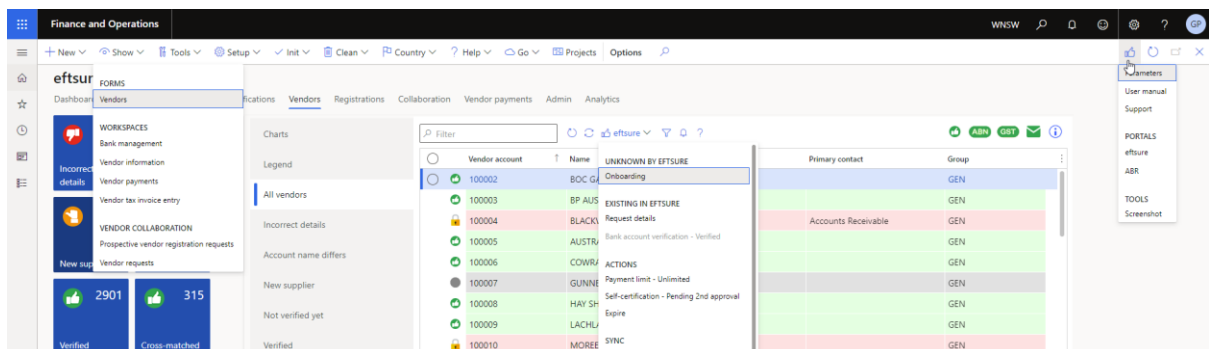
Count of red suppliers, navigates to the list of **Incorrect details** suppliers,

The eFTS menu, in purple is the same menu as previously, but in the form header rather than AppBar.

Menus

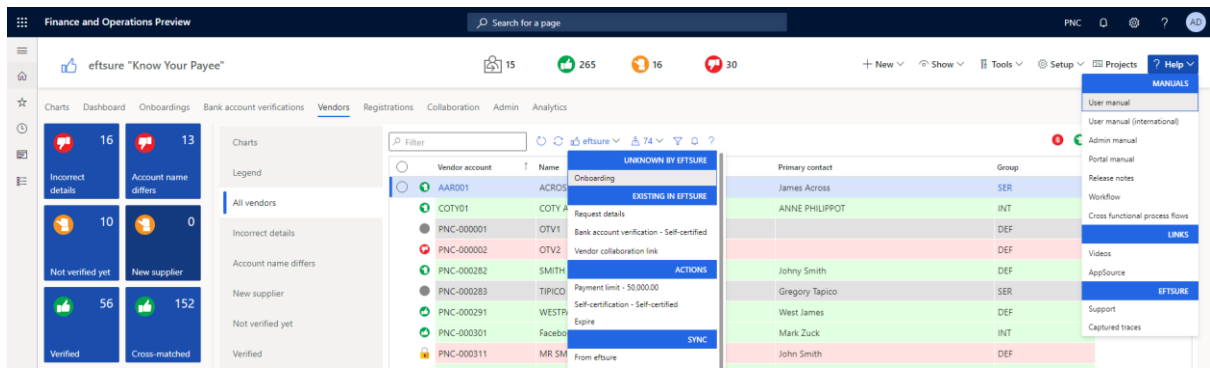
Before:

The menus offered a pale representation of the available options, making it hard to differentiate the headers from their options. As the number of options available in the menus grew, the menus become harder and harder to read/use.



After:

All menus have been redesigned to highlight headers according to theme, and right alignment. The menu items have also been rearranged into their matching categories:



Charts

Projects

Toolbars

Workflow viewers